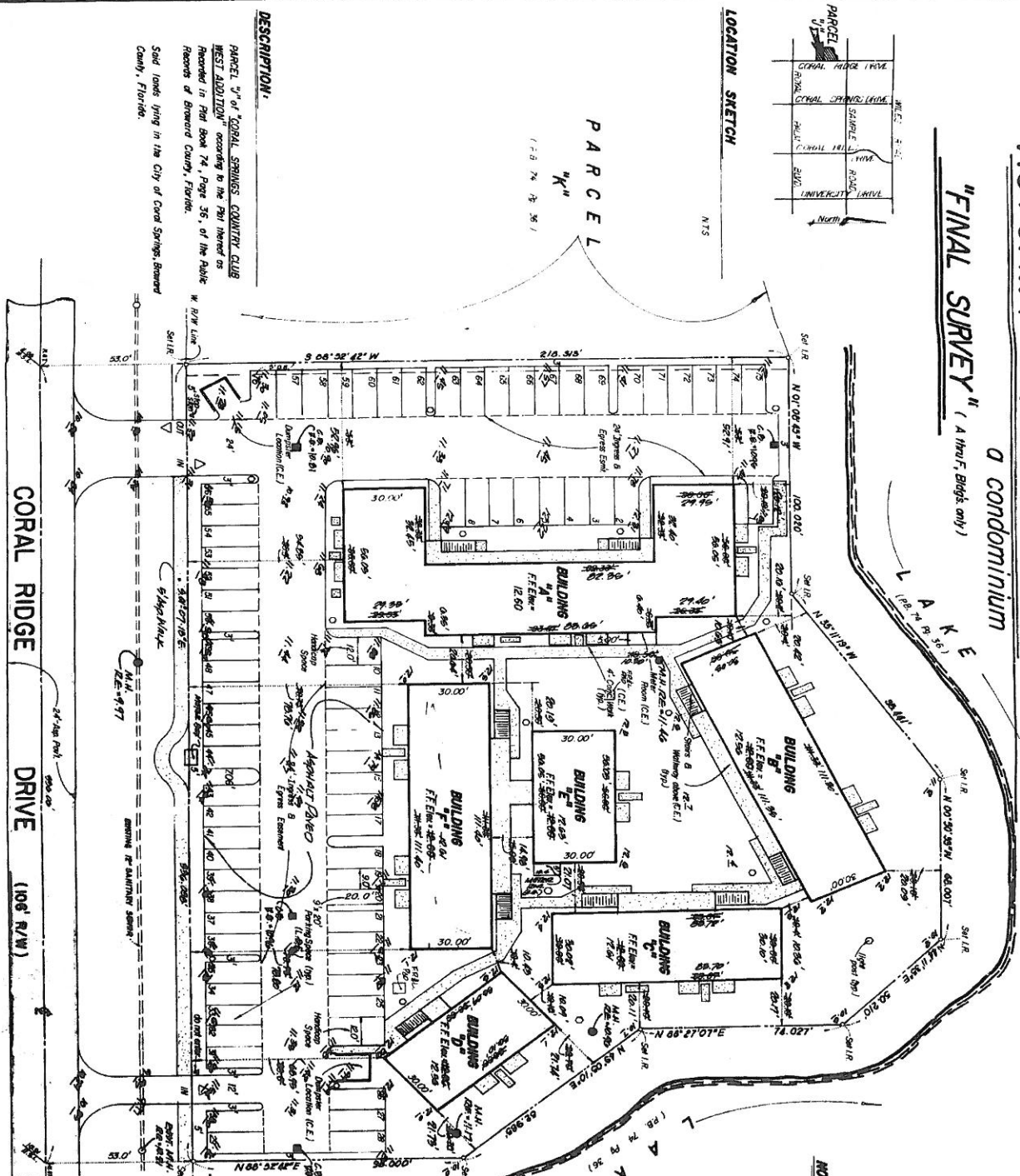
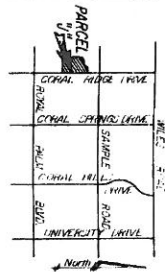
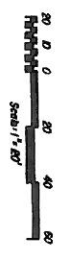


EXHIBIT - "A"
 TO THE DECLARATION OF CONDOMINIUM OF
VICTORIA SQUARE
 A Condominium
 "FINAL SURVEY" (A thru F, Bldgs. only)



- NOTES:
1. Easements shown herein refer to National Geodetic Vertical Datum.
 2. C.E. - Common Elements.
 3. L.C.E. - Limited Common Elements.



- LEGEND:
1. ———— Indicates general condominium boundary.
 2. [Symbol] Indicates concrete walls or notes.
 3. [Symbol] Indicates light post.
 4. [Symbol] Indicates stop sign.

PROPOSED AS BUILT
 336.60' 27.96'

Handwritten signature and date:
 [Signature] 1/23/81

DESCRIPTION:
 PARCEL "V" of CORAL SPRINGS COUNTRY CLUB WEST ADDITION according to the Plan thereof as recorded in Plan Book 74, Page 35, of the Public Records of Broward County, Florida.
 Said lands lying in the City of Coral Springs, Broward County, Florida.

CORAL RIDGE DRIVE (106' R/W)

(P.B. 70 P. 41)

CERTIFICATION:

This CERTIFICATION made this 12th day of January, 1981, by the undersigned surveying firm is made pursuant to the provisions of Section 716.104(1)(b) of the Florida Statutes, as amended, and is a CERTIFICATION that the attached EXHIBIT "A", sheets 1 thru 3 are an accurate representation of the improvements, described therein, and that the construction of said improvements AS CONSTRUCTED, so that such individual lots with the wording in the Declaration of Condominium of VICTORIA SQUARE, a condominium, conform to the location and dimensions of the improvements described and that said location and location and dimensions of Common Elements, and each apartment can be determined from these materials.

DENNIS R. POORE, INC.
 Surveyors - Engineers - Planners

Dennis R. Poore, P.L.S. (Professional Land Surveyor) License No. 1449
 Dennis R. Poore, P.L.S. (Professional Land Surveyor) License No. 1450

DATE: JULY, 1980
 SHEET: 1 OF 3

"SURVEY PLOT PLAN and GRAPHIC DESCRIPTION OF IMPROVEMENTS"

DENNIS R. POORE, INC. LAND SURVEYING AND ENGINEERING
 12201 N.W. 35th STREET, CORAL SPRINGS, FLORIDA 33065